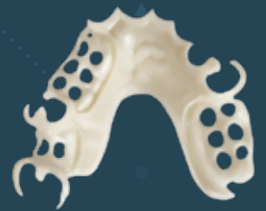




STOMADENT

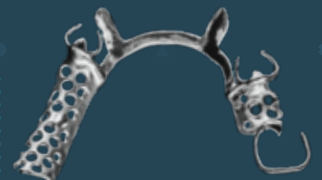
FULL SERVICE LAB

STOMADENTLAB.COM



REMOVABLES / CROWN & BRIDGE

Fee Schedule



REMOVABLES

PRODUCTION SCHEDULE

Immediate Dentures (start to finish)	7 days
Acrylic Partial	5 days
Bite Registration	2 days
Custom & Bleaching Tray	2 days
Cast Frame (Wironium only)	7 days
Titanium Milled Frame	6 days
Flipper (1-3 teeth - no clasps)	3 days
Nightguard/Splint	3 days
Process & Finish Dent/Partial	4 days
Repair/Reline	same day
Set Up/Wax Up	4 days
Acetal / Thermoflex Frame	4 days
Thermoflex Clasp/Repair	2 days
Valplast Clasp/Repair	2 days
Unilateral (Acrylic & Valplast or TCS, 1-3 teeth)	3 days
Valplast or TCS Partial	5 days
Valplast or TCS Reline/Repair	2 days
Space Maintainer	5 days

Note: We do NOT count the day of the pick up.

REMOVABLES WARRANTY

Cast Metal Partials	1 year
Acrylic Dentures & Partials	1 year
Acrylic Flippers	1 year
TCS/Flexible Partials	lifetime*

*Against breakage

COMPLETE DENTURES

(Does not include custom tray, bite rim or try in)



Immediate Denture (economy teeth)	\$319.00
Transitional / Economy Denture (economy teeth)	\$319.00
Basic Denture (basic teeth)	\$344.00
Premium Denture (premium teeth)	\$451.00
Set up & Wax up Denture	\$148.50
Process & Finish Denture	\$148.50
Denture Reline	\$135.00
Denture Repair (starting from)	\$88.00
Duplicate Denture (no warranty)	\$275.00

ACRYLIC PARTIALS



Flipper one tooth (replace 1 to 3 teeth, no clasp)	\$121.00 **
Transitional / Interim Partial	\$248.60 **
Immediate Partial (does not include teeth or clasps)	\$232.00 **
Acrylic Partial (with teeth, does not include clasps)	\$211.00 **
Acrylic Partial Repair (starting from)	\$88.00

3D DIGITAL MILLED AND PRINTED



Premium Digital Milled Denture (premium teeth)	\$539.00
Premium Digital Milled Denture (porcelain teeth)	\$545.00
Digital Milled Base with Printed Teeth	\$438.90
Basic Digital Printed Denture	\$319.00
Transitional / Economy Digital Printed Denture	\$218.00
Acetal Resin Milled Framework	\$218.00
Titanium Milled Partial Framework	\$218.00
Wironium (Cr/Co) Digital Cast Framework	\$195.00

NOTE!

We are also able to fabricate all traditional and conventional restorations via CAD/CAM technology.

METAL FREE & FLEXIBLE PARTIALS



Acetal Resin Milled Framework	\$218.00
Valplast or TCS complete partial (<i>with teeth</i>)	\$380.60 **
Unilateral Valplast or TCS partial (<i>teeth extra</i>)	\$202.00 **
Valplast or TCS clasp (<i>each</i>)	\$63.00
Valplast or TCS reline	\$175.00
Valplast or TCS repair (<i>starting from</i>)	\$121.00
Unilateral Acetal Resin frame	\$136.40 **
Acetal Resin Reline	\$131.00
Acetal Resin Repair (<i>starting from</i>)	\$89.00
Acetal Resin Clasp (<i>each</i>)	\$85.00

METAL PARTIALS



Titanium Milled Partial Framework	\$218.00
Wironium (Cr/Co) cast frame only	\$195.00
Unilateral cast frame only	\$113.00
Unilateral titanium frame	\$136.00
Cast metal internal reinforcement bar	\$198.00
Titanium Milled Reinforcement Bar	\$198.00
Set up & wax up partial	\$115.00
Process & finish partial	\$134.00
Metal mesh	\$149.00

METAL REPAIR



Cast clasp (<i>starting from</i>)	\$69.00
Cast metal repair Small	\$79.00
Cast metal repair Large	\$99.00
Laser Welding (<i>each repair starting from</i>)	\$86.00

** Duplicate model required

NIGHTGUARDS & MOUTHGUARDS



Hard Nightguards	\$165.00
Resilient Nightguard (<i>KeySplint®</i>)	\$165.00
Hard/Soft Nightguard (<i>Talon®</i>)	\$165.00
Sport Guard (<i>Pro-Form®, call for colors</i>)	\$82.50
Bleaching tray	\$82.50
Essix Retainer	\$106.70

EXTRA SERVICES

Custom tray	\$32.00
Bite registration (<i>wax rim on base plate</i>)	\$45.00
Try in (<i>per arch</i>)	\$25.00
Re-setting teeth (<i>per arch</i>)	\$51.00
Duplicate model	\$17.00
Processing attachments into denture base (<i>each</i>)	\$50.00
Study model	\$17.00
Wrought Wire	\$45.00
Wire mesh (<i>for repairs</i>)	\$65.00
Fiber Force	\$143.00
E-Gasket (<i>soft gasket around existing teeth</i>)	\$64.00
Soft liner Sheer splint ***	\$88.00
Molloplast B soft liner ***	\$159.50

*** in addition to denture relining charge

DENTURE TEETH SELECTION

Economy anterior (<i>cart</i>)	\$27.00
Economy posterior (<i>cart</i>)	\$24.00
Basic anterior	\$38.00
Basic posterior	\$35.00
Premium anterior	\$89.00
Premium posterior	\$67.00
Porcelain anterior	\$99.00
Porcelain posterior	\$89.00

CROWN & BRIDGE



ALL CERAMIC CROWN/BRIDGE (per unit)

VarseoSmile Hybrid Porcelain NEW	\$109.00
Emax Posterior	\$141.00
Emax Anterior (crown or veneer)	\$176.00
Translucent Zirconia (full contour)	\$132.00
Porcelain fused to Zirconia (PFZ)	\$176.00
Maryland Bridge (Zirconia, 1 pontic & 2 wings)	\$187.00

CUSTOM IMPLANT FABRICATIONS

Screw Retained Zirconia Crown	\$238.00
Titanium Custom Abutment	\$326.00
Zirconia Custom Abutment	\$302.00

(Please call for price and availability on pre-manufactured parts)

CAST METAL FABRICATION CROWN/BRIDGE

Gold Crown (full contour)	\$110.00* + alloy
Gold Inlay / Onlay	\$106.00* + alloy

* We weigh full gold crowns, and charge according to current retail prices. PFM price for labor, not including metal.

ADDITIONAL SERVICES

Crown Fit to Partial	\$44.00
Crown Rest	\$20.00
Diagnostic Wax-Up (per unit)	\$24.00
Metal Lingual	\$16.00
Metal Occlusal	\$16.00
Metal Margin	\$13.00
Porcelain Margin	\$35.00
Reduction Coping	\$30.00
Splint (bridges)	\$27.00
Survey (per unit)	\$27.00
Cast Post	\$35.00

All prices include complete model work, articulation, die trim.

We need seven (7) working days for most crown and bridge cases.